

Instructions for installing TC (trip computer) on the Chevrolet Aveo

Package of TC:

1. Trip Computer - 1 pc.
2. Glass Schild - 1 pc.
3. Electrical harness - 1 pc.
4. Plastic mounting TC - 4 pcs.
5. Crimping terminal - 3 pcs.

Installation:

1. Take up the plastic visor of the watch and pull it up, as shown by the arrows.



It is fixed in the torpedo snaps.



4. Unscrew the two screws that fasten the clock.



5. Gently pulling the clock on himself (slightly stretched), disconnect it from the connector by pressing on the appropriate tab on top of the connector.

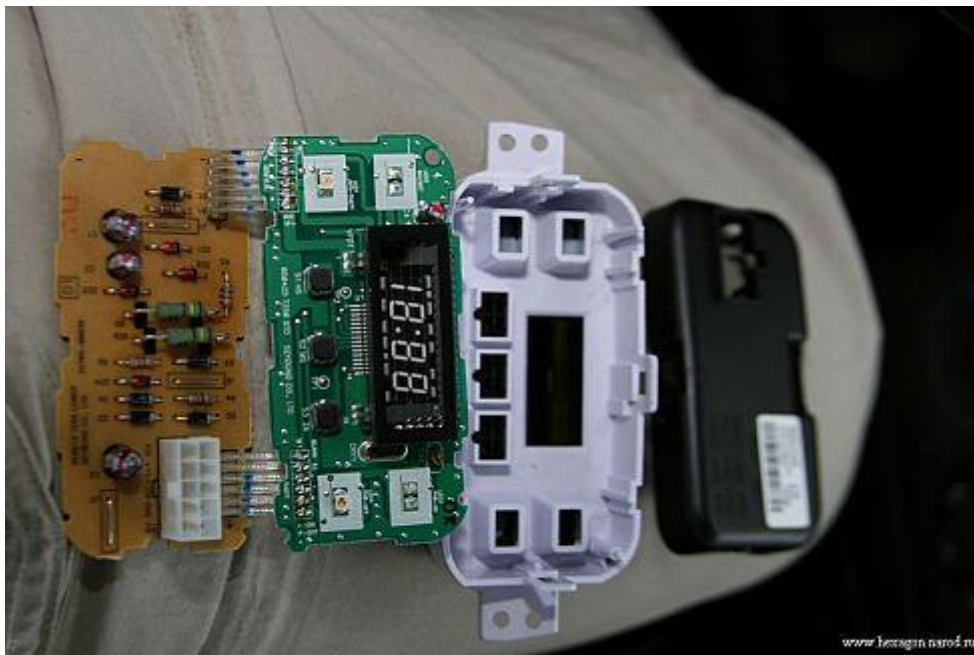




6. Remove the back cover from the watch carefully so as not to break the latch that holds it.



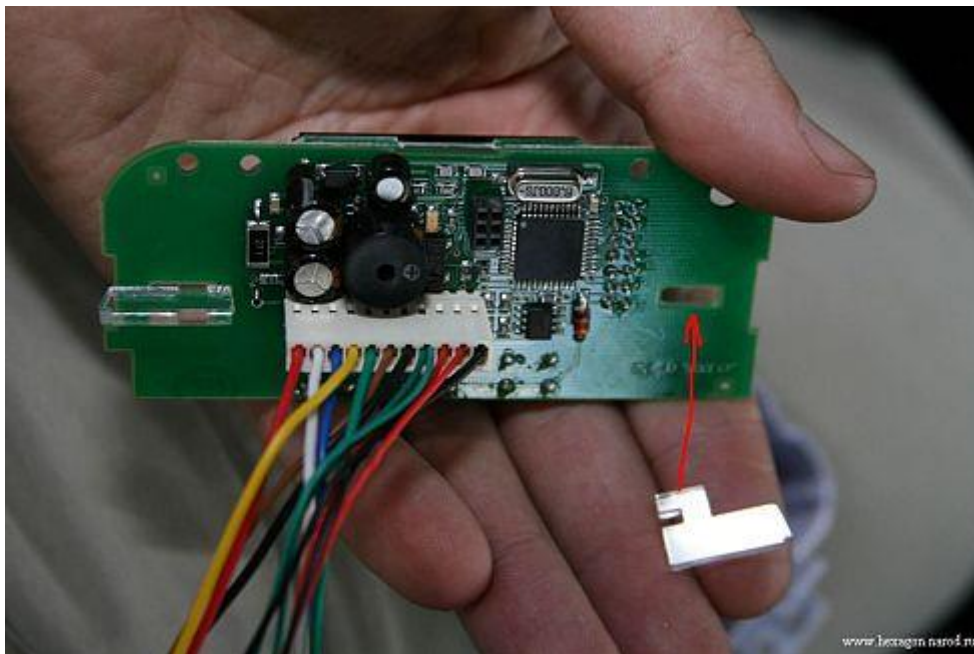
7. Take out the insides of the watch from the case. Leave the buttons in the case. Remove the front glass from the case.



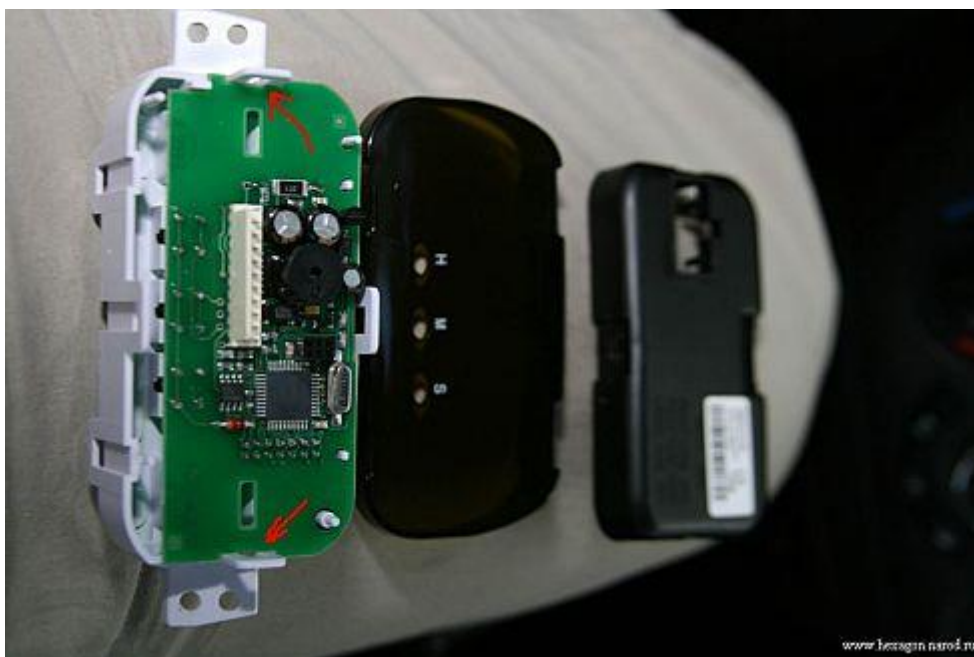
8. Before us are three parts: 1- watch case , 2- glass, 3- rear cover . We need only the first part, the rest to remove along with the insides of the clock.



9. Carefully take the TC board and insert into the holes special plastic brackets.



10. Insert the TC board into the clock case.



If you have a clock with part number 96945866 or 96945863 (newer clocks), then inside the clock you need to bite off a plastic rack with pliers, as shown in the figure:



11. Turn over the case and insert the Aveo glass - shield.



TC is assembled, now let's install it directly into the car.

12. Remove the cover around the radio.



13. Then remove the deflectors and unscrewing 2 screws on the cover above the deflectors.





14. Connect the wires to the TC and pull them into the hole where the connector comes from, which was connected to the clock.



15. Fasten the TC in car, using as a gasket between the case of the TC and the torpedo, special fasteners resemble 8 in shape



Here is what the screwed-in TC and wired wires look like.



16. Install the plastic visor in place.



17. Then remove the dashboard to stretch the wire on. To do this, unscrew the two screws under the dashboard visor.



18. Pull a plastic casing. It is secured on snaps.



19. Visor dashboard pull up. It is secured on snaps too.



20. Unscrew the 4 screws.

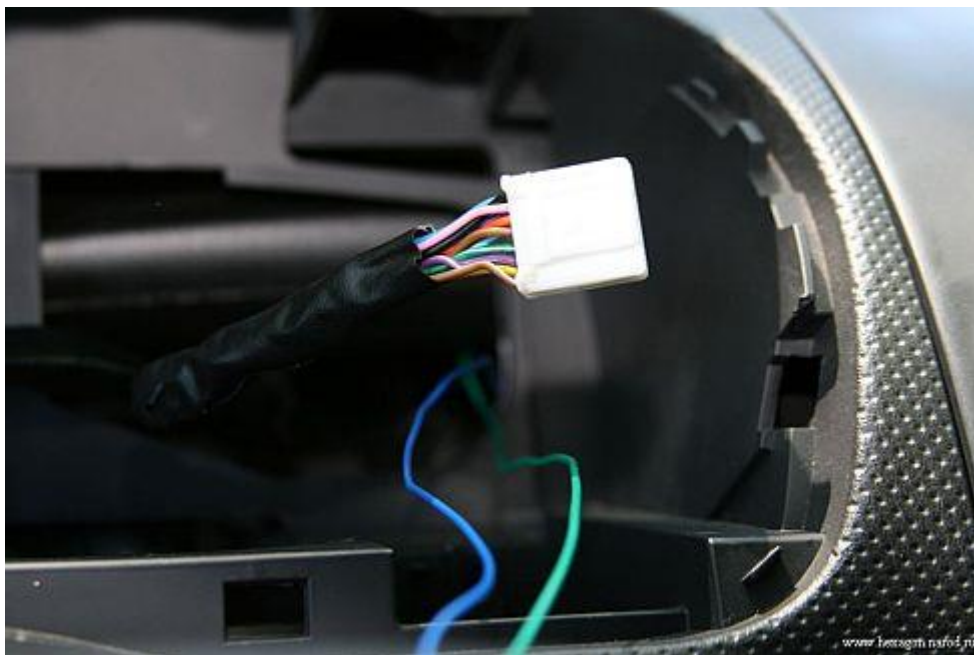


And gently remove the instrument panel itself.

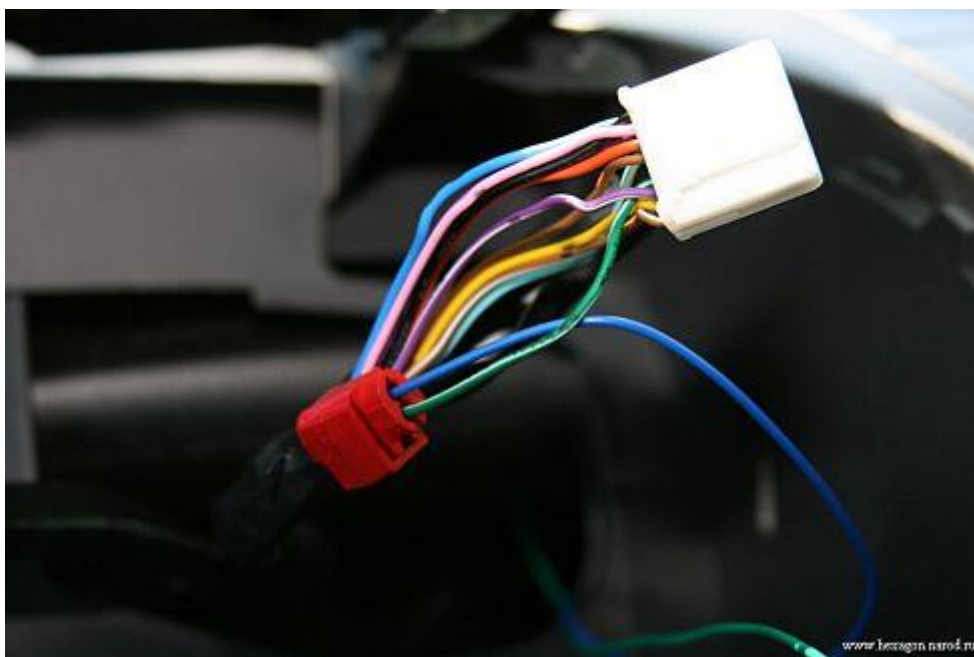
Disconnect the right connector by clicking on the petal and pulling it towards you.



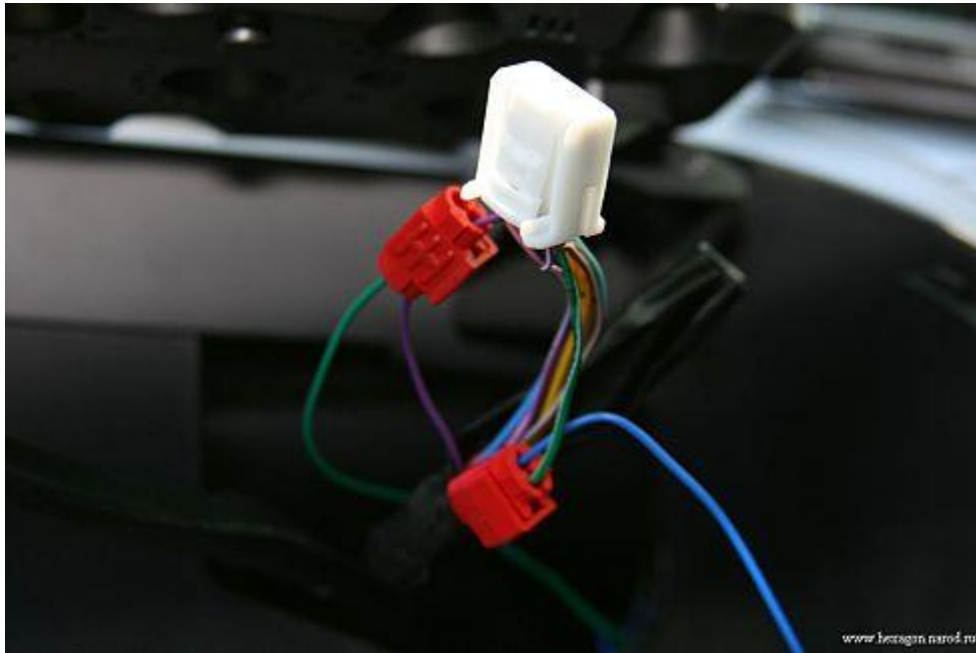
21. Remove the braid from it (you will need to remove 2-3 cm).



Find in the spit of wires green with a white stripe and connect to it the BLUE wire from the TC with the help of special terminals that come with the TC.



Then we find the purple wire (FULLY PURPLE) and attach the GREEN wire from the TC to it using special terminals that come with the TC.



Once again check:

BLUE WIRE of TC (SPEED) - connects to the speedometer sensor (vehicle speed sensor).

Right connector on the instrument panel. Green and white wire.

GREEN (FUEL) - Connection to the fuel level sensor

Right connector on the instrument panel. Purple wire.



22. Insulate the connector. Plug into the dashboard and reassemble everything in reverse order. You can check the wires correct connection by driving car. Speedometer on the TC should already show the speed.



23.

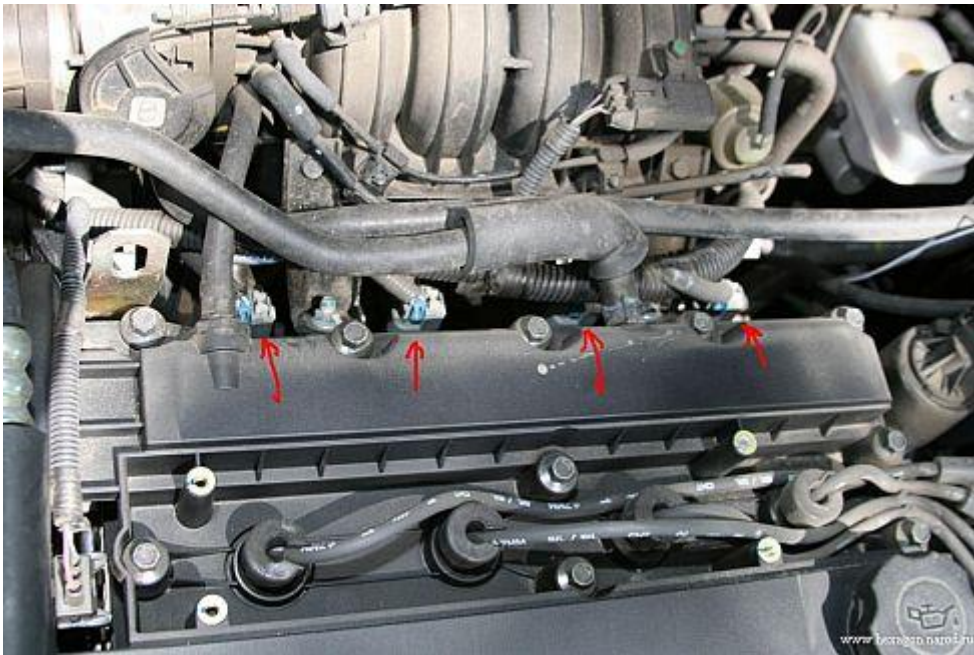
WHITE (INJ) - Connection to a nozzle (injector).

It can only be found under the hood, hooked directly onto the computer connector, or hooked directly to the nozzle (any). Two wires come to each nozzle. One of them – power (plus 12V) (we do not need). And the second is the desired one. According to him with the computer comes a control minus. To connect it we climb under the hood. Just first you need to push the WHITE wire from the TC into the engine compartment. Now you need to remove the plastic cover from the engine. To do this, unscrew the 4 hex screws, remove all 2 rubber tubes and 3 plastic holders on the cover, open the oil filler cover and then quietly remove the plastic cover.

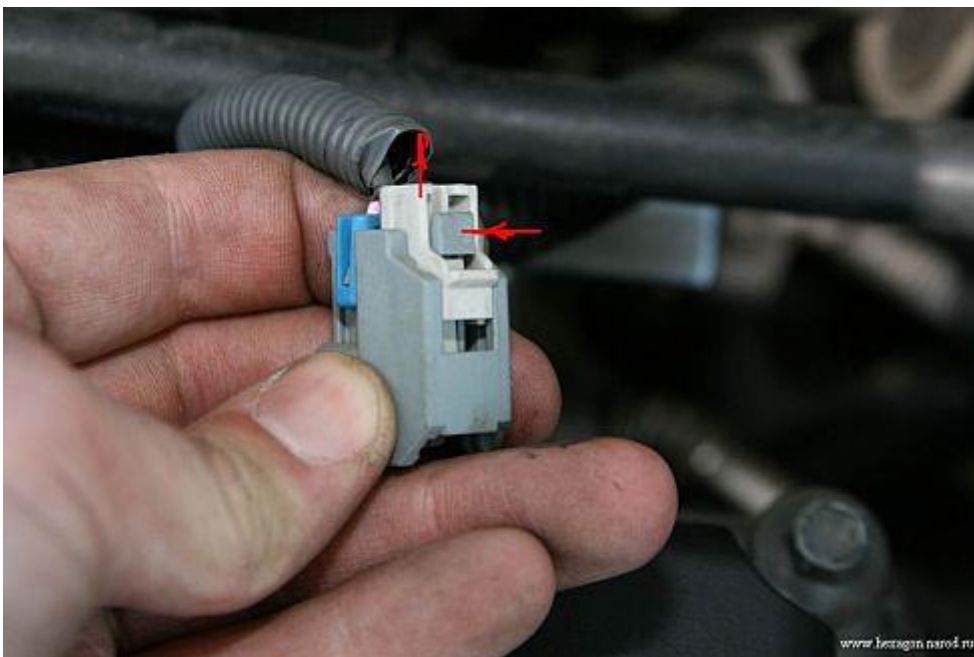


With trailers, I showed the places where the nozzles are located.

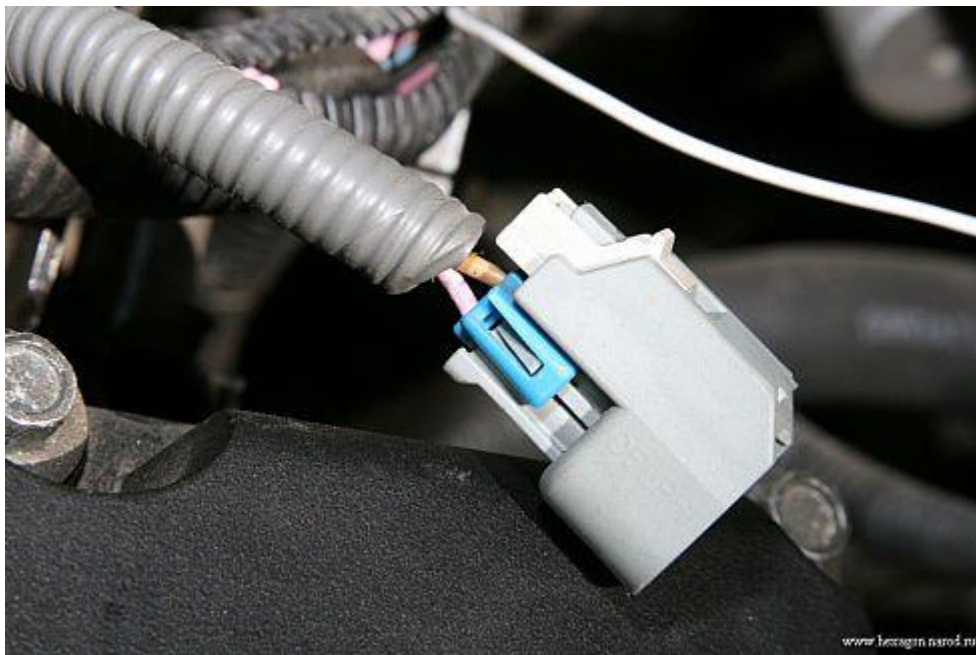




24. Remove the connector from right nozzle. To do this, first pull the white locking tab up and , by clicking on the plate , pull the connector towards us.



The colors of the wires that go into the connector are pink (power) and brown (we need the control minus) .



Then, having previously stretched the WHITE wire from the TC to the corrugation, we connect it to the brown wire using special red terminals that come with the TC.



If the white wire will connect correctly the TC show turns / min.

25. The temperature sensor (goes separately from the kit) is carried along the threshold and mounted inside the rack.



26. Here is the appearance of the installed TC.





EVERYTHING IS WORKING. After all this, its required to adjust the TC, you need to enter the following correction factors in the computer's memory:

Tachometer - **4**

Tank residue – **6 л**

Tank capacity – **45 л**

Full tank (coefficient) – **2.11**

Empty tank (coefficient) – **4.25**

Fuel - **104%**

Mileage - **37,3%**

For more precise computer settings, use the instruction manual.

.....